

WORKSHEET

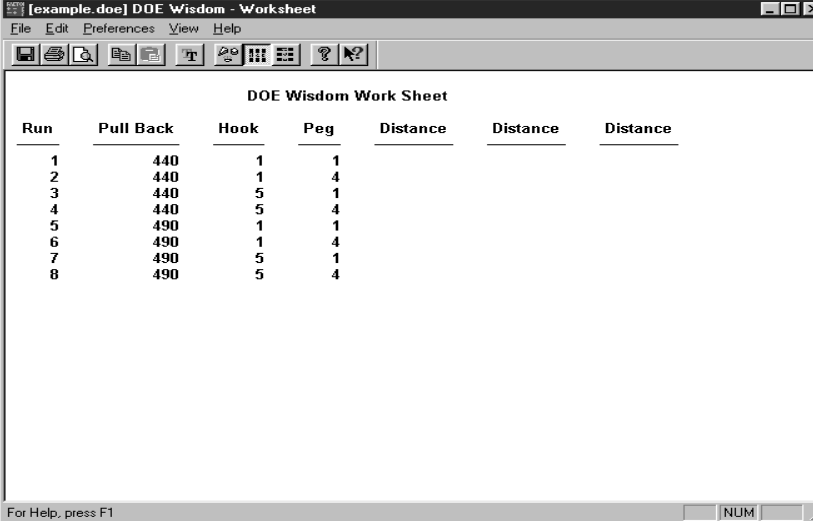
Worksheet Window

Worksheet Purpose

Before running your experiment, you need to make a copy of the orthogonal array - your design matrix. DOE Wisdom will create a worksheet listing the runs to perform in the order you are to perform them. Orthogonal values will be substituted with the real values. The worksheet will simply be the design matrix with “real” settings and the appropriate number of places to record your measured responses for each run.

Creating a Worksheet

Double-click on the **Worksheet** folder in the **Project** window or click the **Worksheet** button. The Worksheet Window will appear.



The screenshot shows a window titled "[example.doe] DOE Wisdom - Worksheet". The window contains a table titled "DOE Wisdom Work Sheet" with the following data:

Run	Pull Back	Hook	Peg	Distance	Distance	Distance
1	440	1	1			
2	440	1	4			
3	440	5	1			
4	440	5	4			
5	490	1	1			
6	490	1	4			
7	490	5	1			
8	490	5	4			

At the bottom of the window, there is a status bar that says "For Help, press F1" and a "NUM" indicator.

Figure 3-1

Chapter 3: Worksheet

A worksheet is generated according to the design that was defined in the Design Definition Dialog Box. Figure 3-1 is an example of the worksheet for the catapult experiment. The factor settings for each run are listed on the worksheet. Each run also has a blank space for response data.

Worksheet File Menu Commands

The worksheet **File** menu offers the following commands:

Save	Saves any worksheet settings for this project.
Print	Prints a worksheet. Use this command to print a copy of the worksheet. DOE Wisdom displays the Print screen. This screen allows you to select the printer, printer properties, print range, and number of copies. When all selections have been made, choose OK . The worksheet will be printed.
Print Preview	Displays the document exactly as it will look when printed. With the document displayed you can view each of the pages of the document. If you wish to print the document select the “Print” button. To close the preview without printing the document, select the “Close” button.
Print Setup	Provides setup options for printing. DOE Wisdom displays the Page Setup screen. This screen allows you to select the paper size, paper source, portrait or landscape mode, and margin specifications. When all selections have been made, choose OK .
Properties	Displays the properties of the worksheet. When properties is selected, the following window appears.

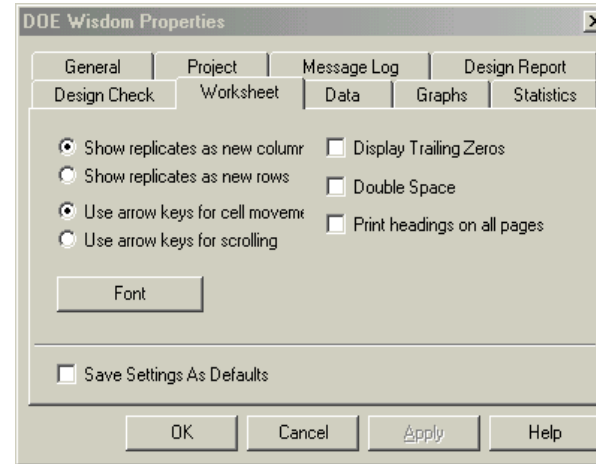


Figure 3-2

Exit Exits the worksheet window.

Worksheet Edit Menu Commands

The worksheet **Edit** menu offers the following commands:

Copy	Copies the worksheet onto the Clipboard. This allows you to easily copy the worksheet to other window programs.
Paste	Pastes data from other window programs into the DOE Wisdom worksheet window. Use this command to paste data from the clipboard into the DOE Wisdom worksheet screen when you are creating a User Defined design. This allows you to easily copy data from other window programs into DOE Wisdom.

Worksheet Preferences Menu Commands

The worksheet **Preferences** menu offers the following commands:

Font	Changes the font attributes of the current Worksheet. Font, Font Style, and Font Size may be defined.
------	---

Worksheet View Menu Commands

The worksheet **View** menu offers the following commands:

Toolbar Shows or hides the toolbar. The toolbar includes buttons for some of the most common worksheet commands such as Save, Print, Print Preview, Copy, Paste, Font, Options, Replicates as Columns, and Replicates as Rows. The worksheet toolbar is shown in Figure 3-3.

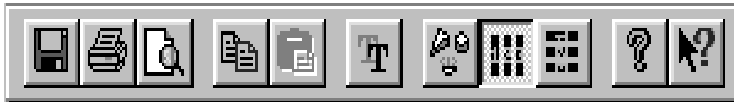


Figure 3-3

Status Bar Shows or hides the Status Bar. The Status Bar describes the action to be executed by the selected menu item or depressed toolbar button.

Options Displays the Worksheet options page which allows you to tailor the report to your needs.

Replicates as Columns Displays each response replicate in a column. The worksheet screen will list each run only once and the replicates will appear as separate columns next to each run. This allows for quick entry of replicate data.

Rows Displays each response replicate in a row. The worksheet screen will list each replicate run as a separate row.

Refresh Refreshes the display. If part of a cell is not visible after entering a new value, selecting this command will cause the screen to be redrawn so that all the data fits into the columns properly.

Worksheet Help Menu Commands

The worksheet **Help** menu offers the following commands:

Worksheet Help This allows the user to display specific worksheet help topics.

Help Topics This allows the user to view Contents, Index, and Find help features.